

LIRR Expansion Project Floral Park to Hicksville

LIRR Modernization Program

New Hyde Park Update
September 13, 2018



Metropolitan Transportation Authority
Capital Construction
Long Island Rail Road



3rd TRACK CONSTRUCTORS
Picone | Dragados USA | CCA Civil | Halmar

Agenda

- 1 Welcome & Introduction**
- 2 Village Input to Date**
- 3 Compatibility with Village Vision**
- 4 Project Background**
- 5 Upcoming Construction Activities**
- 6 Traffic Detour Plan**
- 7 Contact Us**

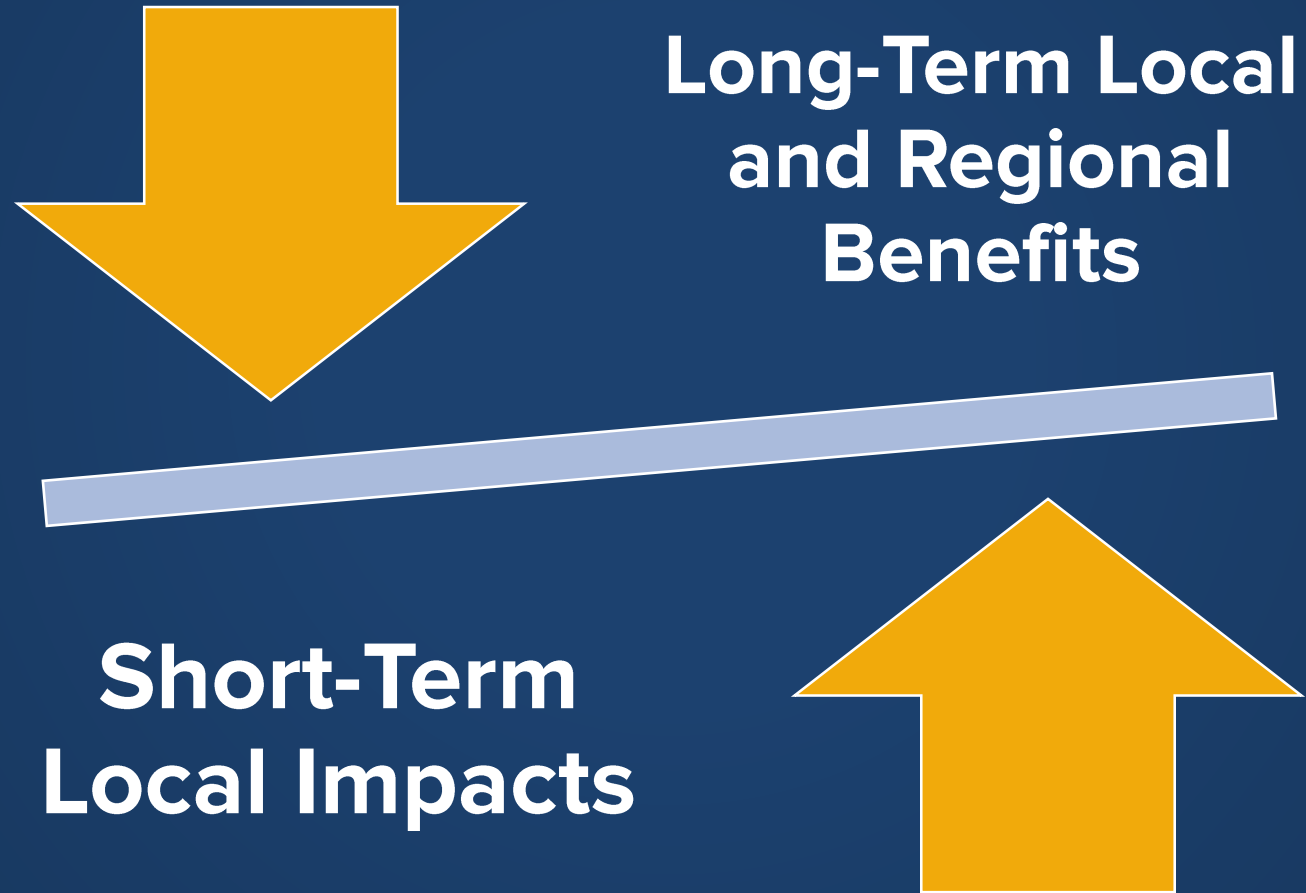


Welcome and Introduction



Village Input to Date

Village Concerns: A Balancing Act



Village of New Hyde Park – Summary of Public Comments

- Sound attenuation wall height and aesthetic considerations
- South 12th Street connectivity
- Station parking and design
- Compatibility with planned rezoning
- Construction schedule and grade crossing closure
- Construction-period disruptions (noise, dust, parking)

Memorandum of Understanding

- MOU executed between LIRR and the Village of New Hyde Park to address local concerns
- Incorporates community commitments, including:
 - Establishing of \$20 million Community Benefits Fund
 - Technical Expert to Review Design Builder Proposals
 - Providing Community Scorecard on 3TC's Performance
 - Conducting Robust Community Outreach and Communication
 - Consulting on Aesthetics of Project Elements
 - Environmental Controls



Compatibility with Village Vision

Aesthetic Consultation: DEIS New Hyde Park Station Rendering



DEIS Community Outreach



New Hyde Park Village Vision

- **The New Hyde Park Village Board of Trustees desires to create a **new and vibrant** downtown center for our community.**
- **The new area will achieve the following objectives:**
 - Create a walkable destination spot for residents to shop, dine and socialize in a spirit of community
 - Stimulate economic development through the use of transit oriented development that includes mixed use retail and residential buildings, highly aesthetic public spaces and high amenity apartment buildings

New Hyde Park Village Vision (cont.)

- **The new area will achieve the following objectives (cont.):**
 - Transform an unattractive industrial district of warehouses that borders the LIRR into a highly attractive downtown strip that has a unique character with a colonial American style
 - Create residential opportunities for local residents who wish to remain in New Hyde Park but may be preparing for the purchase of a single family home or who wish to downsize from a single family home in the area.
 - Make the most of the LIRR Third Track Project and offset the considerable impacts on the people of NHP

Reimagining New Hyde Park



New Hyde Park: Station Plaza

- **Negotiated a \$5M grant from the Governor's Office to initiate project**
 - An additional \$5 M after the project is underway
 - Applied for NYS grant to access funds
- **Proposed local law to create an overlay district**
- **Held exploratory talks with developers to assess interest**
- **Socialized the concept with residents to gauge community support**

New Hyde Park: Station Style Preference





AERIAL VIEW 1

BEFORE



AERIAL VIEW 1

AFTER



AERIAL VIEW 2

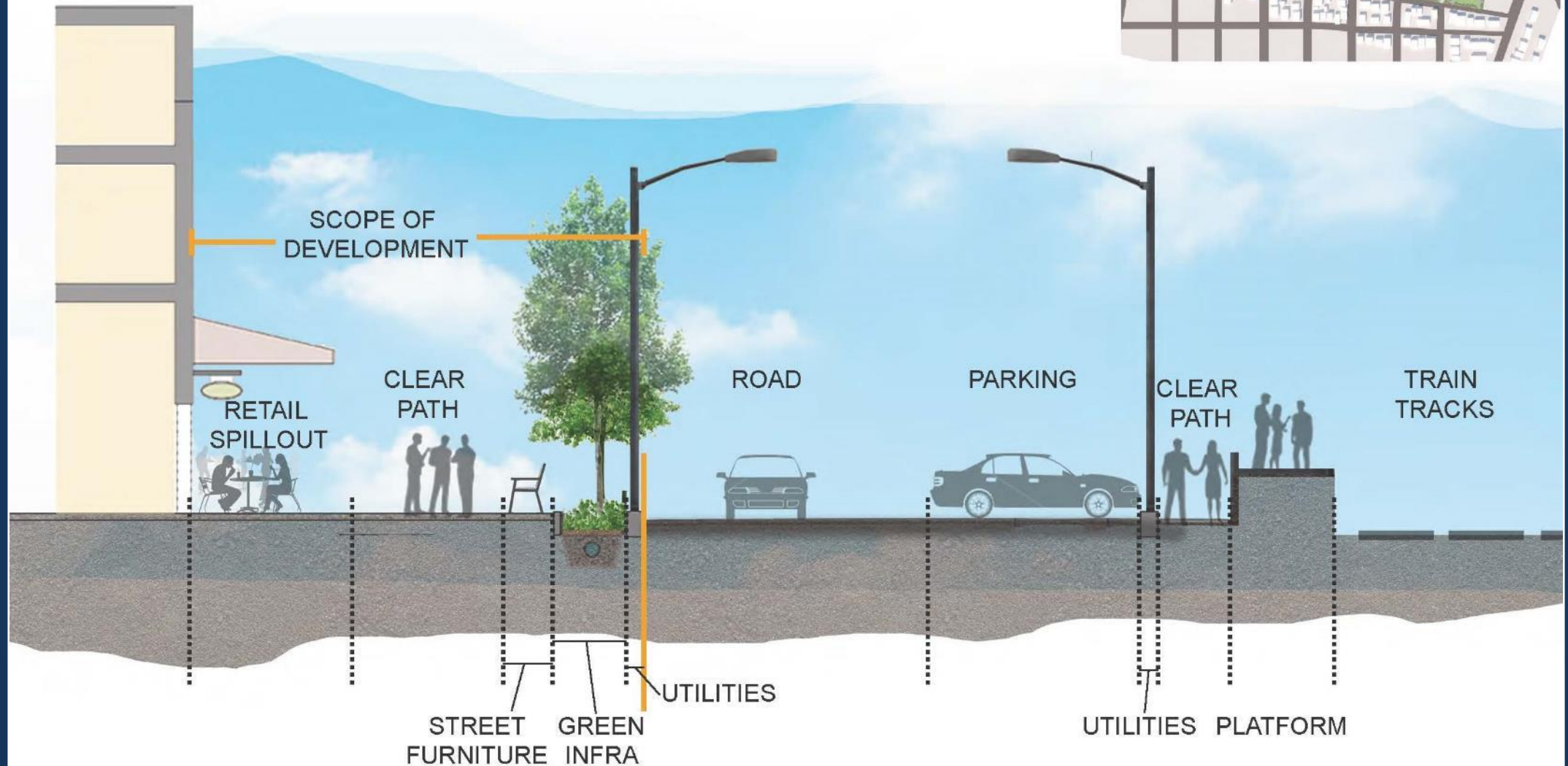
BEFORE



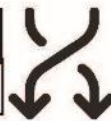
AERIAL VIEW 2

AFTER

PLACEMAKING
URBAN DESIGN
TYPICAL SECTION



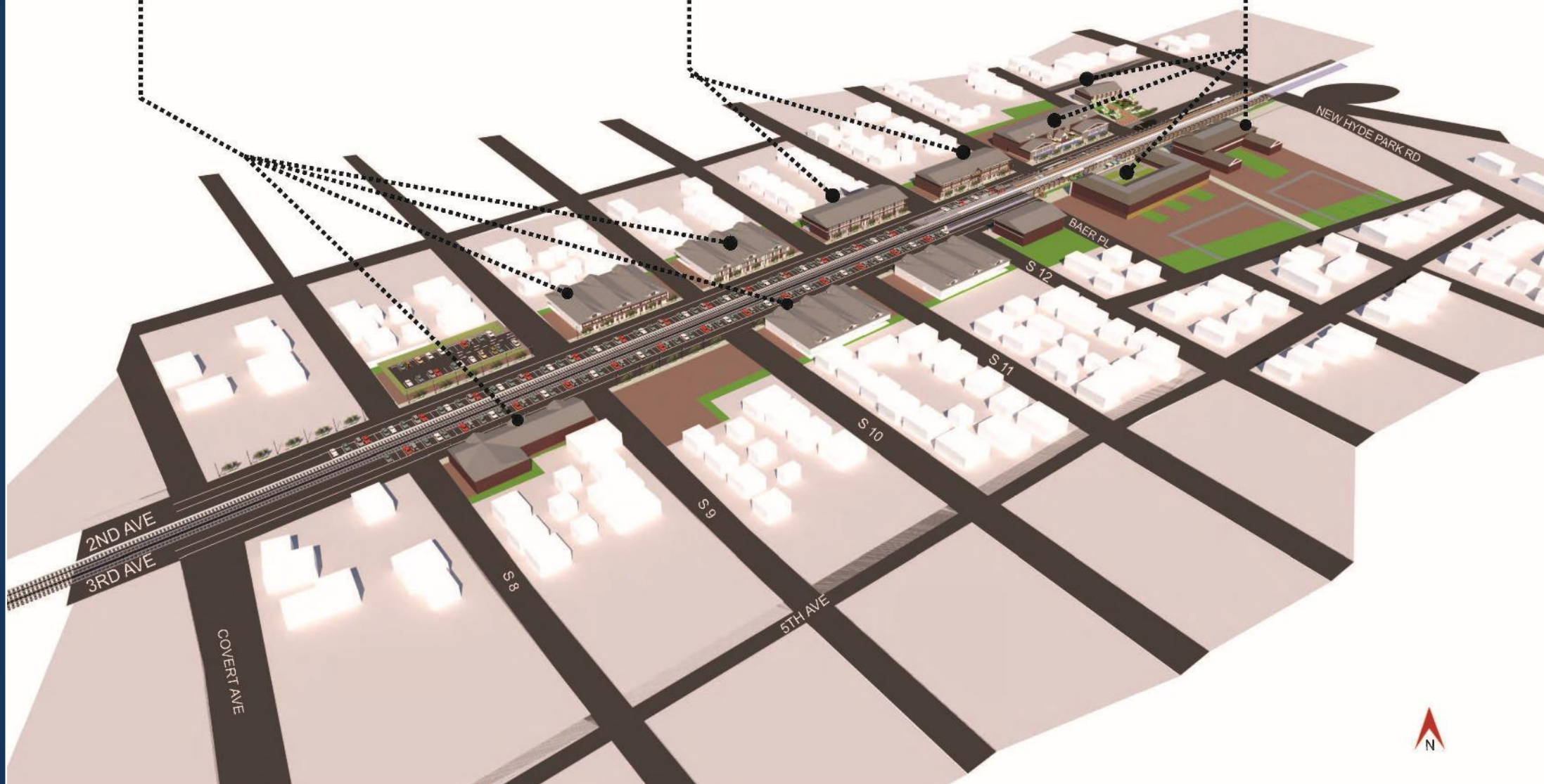
MIXED
USE



TYPE C
MIXED USE RESIDENTIAL

TYPE B
MIXED USE COMMERCIAL

TYPE A
STOREFRONT RETAIL



TYPE A

STOREFRONT RETAIL

- Close to the station
- Large lot areas
- Easy pedestrian access

MIXED
USE

RESIDENTIAL 20%
APARTMENTS/
CONDOS/
MULTI UNIT HOUSING

COMMERCIAL 70%
SUPER MARKETS
FOOD COURTS
MASS RETAIL
GYMS
RESTURANTS AND BARS

OTHER
AT GRADE PARKING
20% PERVIOUS AREA
30% OPEN SPACE
3 FLOORS MAX
20' SIDEWALK



VIEW ON 3RD AVE

BEFORE

TYPE A



VIEW ON 3RD AVE

LINEAR POCKET PARK

TYPE A



VIEW ON 2ND AVE

BEFORE

TYPE A



VIEW ON 2ND AVE

PUBLIC PLAZA

TYPE A



VIEW ON 2ND AVE

BEFORE

TYPE A



VIEW ON 2ND AVE
STOREFRONT RETAIL

TYPE A

TYPE B

MIXED USE COMMERCIAL

- Close to public areas
- Proximity to Type A
- Around Central Nodes

MIXED
USE



RESIDENTIAL 60%
TOWN HOMES
SINGLE FAMILY UNITS
APARTMENTS

COMMERCIAL 40%
CAFES
RESTURANTS
BARS
SMALL SCALE RETAIL

OTHER

AT GRADE PARKING
20% PERVIOUS AREA
10% OPEN SPACE
3 FLOORS MAX
20' SIDEWALK

2ND AVE

3RD AVE

TOWARD NEW HYDE PARK RD



VIEW ON 2ND AVE

BEFORE

TYPE B



VIEW ON 2ND AVE
MIX USE COMMERCIAL

TYPE B

TYPE C

MIXED USE RESIDENTIAL

- Transition into Residential Use
- West ends of avenues
- Retail activity drivers

MIXED
USE



COMMERCIAL 20%
LOCAL VENDORS
DEUS
DAILY CONVENIENCE
MOM AND POP STORES

RESIDENTIAL 70%
TOWN HOMES
SINGLE FAMILY UNITS

OTHER

AT GRADE PARKING
20% PERVIOUS AREA
10% OPEN SPACE
2-3 FLOORS MAX
10' SIDEWALK





VIEW ON 2ND AVE & S9

BEFORE

TYPE C



VIEW ON 2ND AVE & S9
STOREFRONT RETAIL

TYPE C

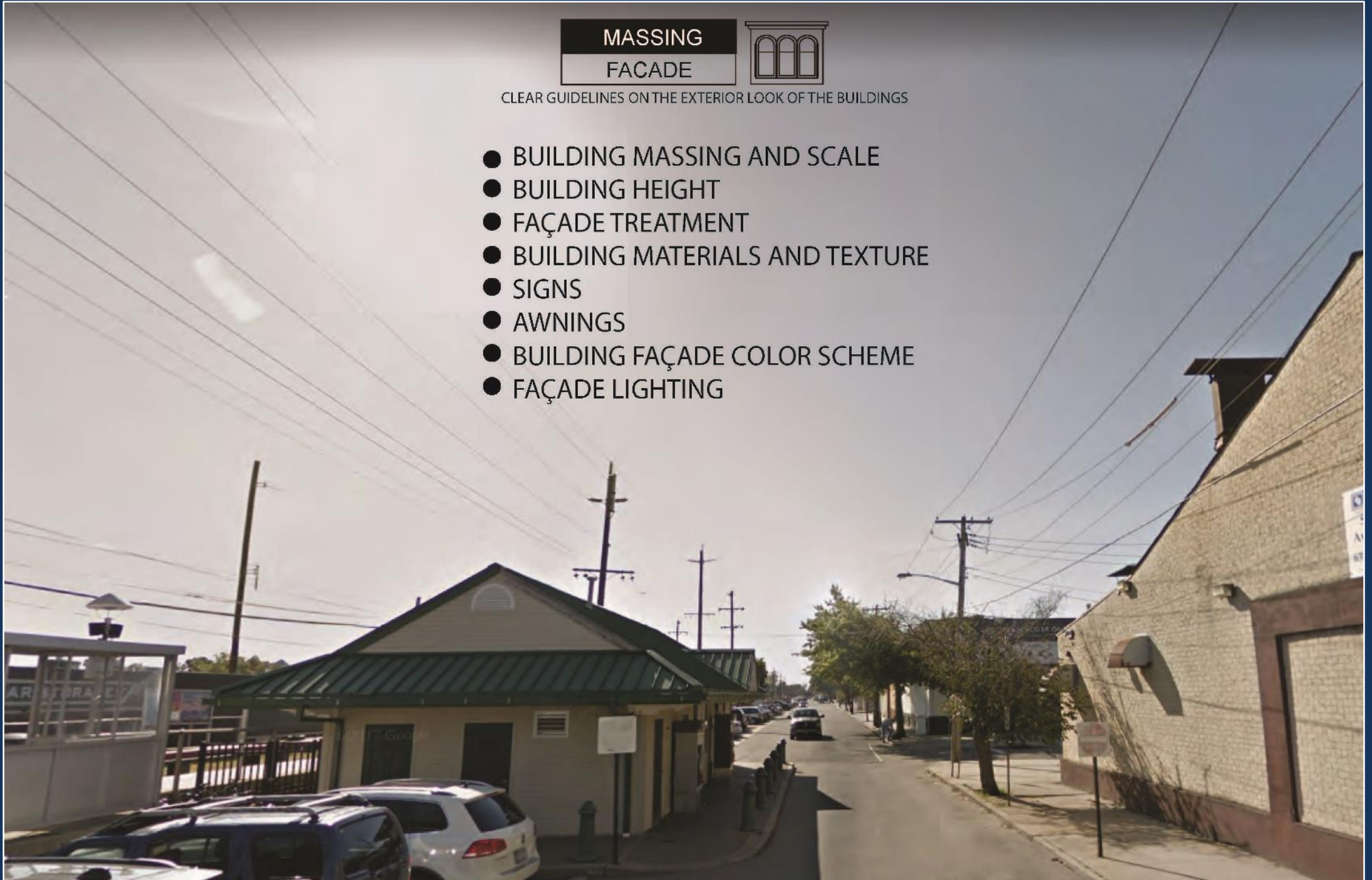
MASSING

FACADE



CLEAR GUIDELINES ON THE EXTERIOR LOOK OF THE BUILDINGS

- BUILDING MASSING AND SCALE
- BUILDING HEIGHT
- FAÇADE TREATMENT
- BUILDING MATERIALS AND TEXTURE
- SIGNS
- AWNINGS
- BUILDING FAÇADE COLOR SCHEME
- FAÇADE LIGHTING



Revised 3TC New Hyde Park Station Rendering



Revised 3TC New Hyde Park Station Rendering



Updated 3TC Renderings of Other Stations





Project Background

Modernizing Long Island

East Side
Access

LIRR
Expansion

Double
Track

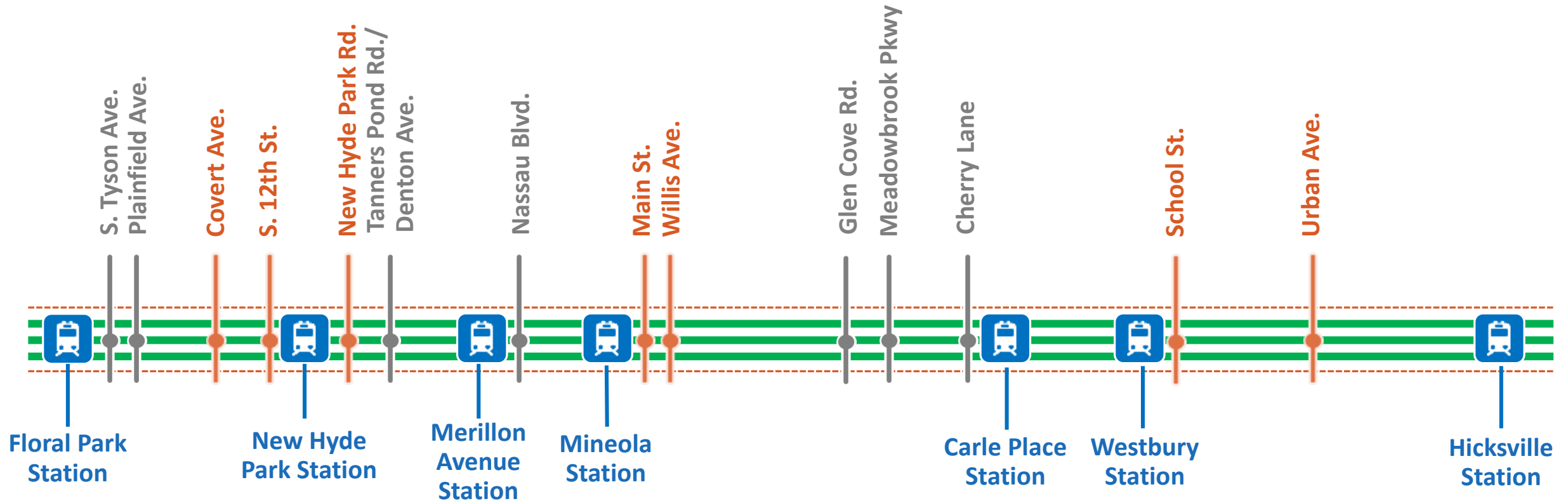
Jamaica
Station

After 70 years of stagnation, a series of **transformative LIRR** capital projects are moving forward

LIRR Modernization Program

- **\$5.6 billion investment** in the LIRR throughout all of Long Island to strengthen the region's rail infrastructure and promote economic growth
- Projects include large **system expansions** to smaller infrastructure efforts such as **substation replacements**
- **Robust partnerships** between MTA, state and local officials, and Long Island communities have made this modernization possible

LIRR Expansion Project Components



9.8-mile Main Line Segment from Floral Park to Hicksville

LIRR Expansion Project by the Numbers

■	Grade Crossing Closures	7
■	Bridge Replacements/Modifications	7
■	Station Improvements	6
■	ADA Elevators	13
■	Substation Replacements/Modifications	8
■	Interlocking Reconstructions	2
■	Retaining/Sound Walls	7.5 miles
■	Pedestrian Overpasses	6
■	Track	9.8 miles

How the Project Benefits New Hyde Park



A BETTER COMMUTE



NOISE REDUCTION



**SAFER, QUIETER
CROSSINGS**



**LESS CONGESTION,
CLEANER AIR**



**STATION IMPROVEMENTS
& INCREASED PARKING**



**BETTER JOBS,
STRONGER ECONOMY**

Project History

January 2016

Governor Cuomo announces the LIRR Expansion Project

2016 - 2017

Scoping, Draft and Final Environmental Impact Statement (EIS) and numerous meetings for communities provide input on project plans

December
2017

Design-build contract with 3rd Track Constructors (3TC)
was approved by MTA Board

January 2018

A Limited Notice to Proceed was issued for 3TC to officially commence
Pre-Construction and Early Start Work

September
2018

Project Groundbreaking

Design-Build Team

LEAD CONTRACTOR FIRMS



LEAD DESIGNER





Upcoming Construction Activities

Design-Build Process

- Innovative, widely used best practice improves efficiency and shortens construction duration
- Well-suited to complex, multi-faceted projects
- Designers and contractors act as one team to produce integrated design and construction sequencing
- Incentivizes faster construction and rewards design-builder for reducing impacts

LIRR Expansion Project Components

Village of New Hyde Park

- New Hyde Park Station Enhancements
- Covert Ave. Grade Crossing Elimination
- South 12th St. Grade Crossing Elimination
- New Hyde Park Rd. Grade Crossing Elimination
- New Hyde Park Surface Parking Lot
- Trackwork
- Signals
- Traction Power
- Retaining and Sound Attenuation Walls
- Utilities Relocation
- Drainage Improvements

Upcoming Construction

Construction of **10 major project elements** will soon commence:

Project	Location	Early Activities	Construction Start
Cherry Lane Bridge Modification	Carle Place	Summer 2018	Fall 2018
Mineola Harrison Parking Structure	Mineola	Summer 2018	Fall 2018
Carle Place Station Renovation	Carle Place	Summer 2018	Fall 2018
Covert Avenue Grade Crossing Elimination	New Hyde Park	Summer 2018	Winter 2019
Urban Avenue Grade Crossing Elimination	New Cassel	Summer 2018	Winter 2019
Merillon Avenue Station Renovation	Garden City	Spring 2019	Spring 2019
Floral Park Station Elevators	Floral Park	Spring 2019	Spring 2019
South Tyson Avenue Bridge Modification	Floral Park	Summer 2018	Fall 2018
Nassau Boulevard Bridge Replacement	Garden City	Winter 2019	Spring 2019
Plainfield Avenue Bridge Replacement	Floral Park	Summer 2019	Fall 2019

Sequential Elimination of At-Grade Crossings



Covert Avenue

- Early Work
- Full Closure (6 mo max)
- Complete Construction
- Road Reopens



New Hyde Park Road

- Early Work
- Partial Closure
- Complete construction (9 mo max)
- Road Reopens



South 12th Street

- Early Work
- Permanent Closure
- Complete construction
- Open pedestrian underpass

What to Expect from Construction

- **During the Limited Notice to Proceed (now until October 2018):**
 - Limited street closures
 - Utility relocations and advanced preparatory work
 - Geotechnical investigations and surveys
- **During the Notice to Proceed (October 2018 and onward):**
 - Excavation with heavy earth-moving equipment
 - Work increasing at Covert Avenue
 - Demolition of 115 NHP Road and 124 Covert Avenue
 - Construction on right-of-way and on streets, including lane/road closures

Case Study: Covert Ave Utility Work

- **Anticipated to occur through Thursday night (9/13)**
- **Project-related work conducted by third parties**
- **National Grid gas utility relocation**
 - Relocating utilities from road to sidewalk to allow for future undergrade crossing
 - Resulted in overnight and weekend work (i.e. near Wayne Avenue and Covert Avenue)
 - Loud, heavy machinery and bright lights were used

Case Study: Covert Ave Utility Work (Cont.)

■ **As a result, our team:**

- Held an emergency coordination meeting between National Grid, 3TC, MTA-LIRR
- Established direct line of communication between National Grid's contractor and 3TC's utilities coordinator
- Will include third party activities on our website and in our look-aheads
- Will schedule weekly conferences with Village
- Will assist utility companies in following 3TC's noise mitigation and outreach protocols

Construction Noise

- Plan to perform most intensive work during the day, quieter activities at night
- Nighttime and weekend work will occur
- Examples of noise control measures:
 - Retrofit equipment (e.g., mufflers)
 - Noise blankets
 - Electric equipment
 - Advanced notice



Traffic Detour Plan

Traffic 101

- First Step – Understand Existing Conditions
 - Gather traffic, pedestrian, and accident data
 - Evaluate signal timing and signage (e.g. stop signs)
 - Evaluate intersection geometry
- Second Step – Create model
 - Assign Levels of Service
 - Intersections are graded from A (best) to F (worst)
- Third Step – Develop Detour Plan
 - Based on results from the existing conditions model
 - Coordinate with local stakeholders
 - Develop a detour plan and identify where mitigation is needed

Traffic Mitigation

- Examples of mitigation measures:
 - Signal timing changes
 - Turning prohibitions
 - Intersection restriping
 - Temporary signals or stop controls
 - Temporary crosswalks

Detour Routes

- 3TC is currently preparing separate Work Zone Traffic Control plans for each phase of each project component and will continue to solicit input as the plans progress.
- 3TC is coordinating with emergency services and local schools to develop appropriate detour routing for road closures.

Detour Route (90 Percent): Covert Avenue Crossing - Northbound



Detour Route (90 Percent): Covert Avenue Crossing - Southbound



Traffic Simulation

- Advanced modeling appropriate for full road closures
- VISSIM is a sophisticated micro-simulation modeling software
- Provides public-friendly visual representation of projected outcome
- Helps confirm detour plan

VISSIM Model





Contact Us

Stakeholder Engagement to Date



The Project Team has undertaken an **unprecedented level** of community outreach. To date, hundreds of meetings have been held with elected officials, community leaders, homeowners, businesses, LIRR customers and other stakeholders. This input is being used to improve designs and minimize construction impacts.

3TC's Community Outreach



Travis Brennan
3TC Director of Community Outreach



Judy White
Floral Park and New Hyde Park



William Miller
3TC Project Outreach Manager



Camille Koorey
Floral Park and New Hyde Park

Contact Us



24/7 Community Hotline
(516) 203 – 4955



Email
CommunityOutreach@3rdTC.com



Website
www.ThirdTrackLI.com
www.AModernLI.com



Community Information Center
114 Old Country Road
Mineola, NY 11501
By appointment only

A photograph of a train station platform. On the left, a brick building with 'Long Island Rail Road' signage is visible. A man in a blue sweater and jeans stands on the platform, looking towards a train. The train, a blue and yellow locomotive with the number 7186, is approaching on the tracks. A yellow safety line on the platform has the text 'WATCH THE GAP' written on it. In the background, there are trees and a clear blue sky. A semi-transparent dark blue banner with the text 'Questions and Answers' is overlaid across the center of the image.

Questions and Answers